



BUSINESS INDICATORS

AUSTRALIAN
CAPITAL
TERRITORY

EMBARGO: 11:30AM (CANBERRA TIME) MON 20 SEPT 1999

CONTENTS

	<i>page</i>
Notes	2
Summary of findings	3
Selected business indicators	5
FEATURE ARTICLES	
Career Experience in the ACT	7
Carers in the ACT	9
TABLES	
1 Business expectations: Sales, September quarter 1999/ June quarter 2000, expected aggregate change	10
2 Business indicators	11
3 ACT in relation to the rest of Australia	14
4 ACT in relation to the rest of Australia—percentage change	15

- For further information about these and related statistics, contact Natalie Collins on Canberra 02 6207 0446 or Will Blythe on Canberra 02 6207 0311, or Client Services in any ABS office as shown on the back cover of this publication.

NOTES

FORTHCOMING ISSUES

<i>ISSUE</i>	<i>RELEASE DATE</i>
October 1999	19 October 1999
November 1999	23 November 1999
December 1999	21 December 1999
January 2000	25 January 2000
February 2000	22 February 2000
March 2000	20 March 2000

SYMBOLS AND OTHER USAGES

ACT	Australian Capital Territory
n.a.	not available
no.	number
n.p.	not available for publication
p	preliminary
*	Represents data with a standard error of greater than 25%. Caution should be exercised when using this data.
—	nil or rounded to zero

Dalma Jacobs
Regional Director, Australian Capital Territory

SUMMARY OF FINDINGS

UPDATED SERIES

Series updated since the August 1999 issue are: labour force, industrial disputes, retail trade, housing finance, building approvals, motor vehicle registrations, average weekly earnings, wage cost index, house prices and state final demand. The feature articles beginning on page 7 are on Career Experience in the ACT and Carers in the ACT.

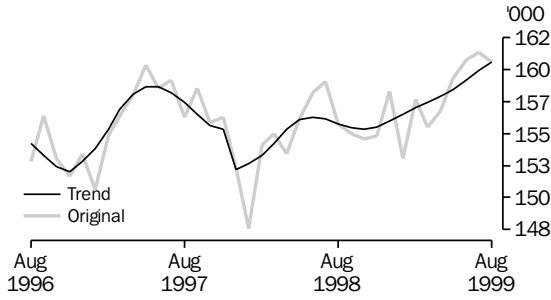
NOTABLE MOVEMENTS

Labour force	In August 1999, the trend unemployment rate for the ACT decreased 0.1 percentage points from the previous month to 5.6%, and decreased 1.2 percentage points compared to August 1998. This is the lowest unemployment rate for the ACT since October 1990. Compared to the previous month trend employment increased by 0.4% (to 160,200 persons). Nationally, trend employment increased by 0.2% from the previous month, while the trend unemployment rate decreased 0.1 percentage points to stand at 7.1% for August 1999. The trend participation rate in the ACT increased by 0.1 percentage points to 71.5% compared to the previous month, while nationally the trend participation rate remained steady at 63.1%.
Industrial disputes	For the 12 months ended May 1999 there were 24 working days lost per thousand employees in the ACT compared to 62 days nationally. In comparison with the 12 months ended May 1998, there was an increase of 33.3% for the ACT and a decrease of 18.4% nationally in the number of working days lost per thousand employees.
Retail turnover	The trend estimate for retail turnover in the ACT for July 1999 was \$221.9 million, an increase of 0.2% from the previous month and was up 6.0% compared to July 1998. The national trend retail turnover recorded a decrease of 0.1% from the previous month but was up 5.8% compared to the previous year.
Housing finance	The trend number of dwelling units financed (including refinancing) in the ACT in July 1999 was 843, an increase of 0.6% from the previous month. The trend estimate for the value of commitments in the ACT decreased 1.0% compared to the previous month, to be \$104 million in July 1999. Refinancing of existing dwellings comprised 9.9% of the total value of dwelling units financed in July 1999, a decrease from 13.1% in the previous month. Nationally, the trend number of dwelling units financed (including refinancing) during July 1999 was 44,862, an increase of 0.4% from the previous month, while the trend estimate for the value of commitments increased to \$5,890 million (up 0.8%) from the previous month.
Building approvals	The trend number of dwelling units approved in the ACT decreased by 4.9% to 135 dwelling units in July 1999. Nationally, the trend number of dwelling units approved increased by 2.0% to 13,692 dwelling units in July 1999.

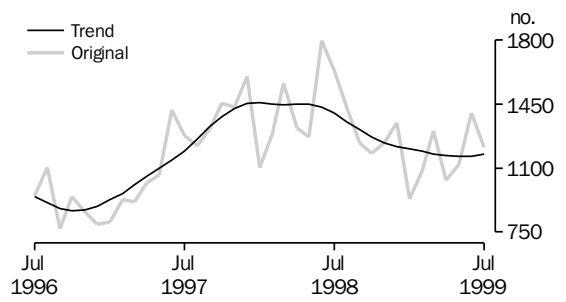
Building approvals <i>continued</i>	The value of non-residential building approvals in the ACT was \$21.4 million in July 1999, an increase of \$18.9 million from the previous month. However there has been a decrease of \$6.2 million (down 22.5%) compared to July 1998. Nationally, the value of non-residential building approvals increased by 21.6% from the previous month but was down 30.9% from July 1998.
Motor vehicle registration	The trend estimate for ACT new motor vehicle registrations in July 1999 was 1,178, up 1.0% from the previous month, but down 15.8% compared to July 1998. Nationally, the trend for total new motor vehicle registrations in July 1999 decreased 0.7% compared to June 1999, and was down 6.2% compared to July 1998.
Average weekly earnings	<p>Trend full-time adult ordinary time earnings in the ACT were \$836.80 in the May quarter 1999, a decrease of \$5.90 (0.7%) since the February quarter 1999. There is also a downward trend in total average earnings from \$698.10 in the February quarter to \$675.80 in the May quarter (down 3.2%). The original series data suggests that private sector full-time average earnings are rising, while private sector part-time average earnings are falling. A similar pattern is emerging in the public sector, but to a lesser degree (see graph on page 5).</p> <p>Comparable national full-time adult ordinary time earnings were \$749.40 in the May quarter 1999, up \$4.20 (0.6%) since the February quarter 1999.</p>
Wage cost index	The public sector wage cost index in the ACT for the June quarter 1999 increased 0.1 percentage points from the previous quarter, and was up 3.2 percentage points from the June quarter 1998. The wage cost index for the private sector increased 0.6 percentage points between the March quarter 1999 and the June quarter 1999, and was up 2.7 percentage points compared to June 1998. The overall wage cost index increased 0.3 percentage points from the previous quarter to 104.4, and increased 3.0 percentage points from the previous year. Nationally, the overall wage cost index increased 0.6 percentage points from the previous quarter to 105.4, and was up 3.2 percentage points compared to the June quarter 1998.
House price index	The established house price annual index for the ACT during the June quarter 1999 increased by 0.7% from the previous quarter and was up 2.5% compared to June quarter 1998. Nationally, the established house price index increased by 2.3% from the previous quarter and was up 5.8% compared to the June quarter 1998.
State final demand	In the ACT, the trend State Final Demand (chain volume measure) grew by 0.8% to \$4,602 million in the June quarter 1999 compared to \$4,567 million in the March quarter 1999, and was up 5.2% (\$226 million) compared to the June quarter 1998. Compensation of employees (chain volume measure) decreased by 0.4% in the June quarter 1999 in trend terms, and was up 2.4% compared to the June quarter 1998. Nationally, in the June quarter 1999 the trend Domestic Final Demand (chain volume measure) grew by 1.0% compared to the March quarter 1999, and was up 4.6% compared to the June quarter 1998.

SELECTED BUSINESS INDICATORS

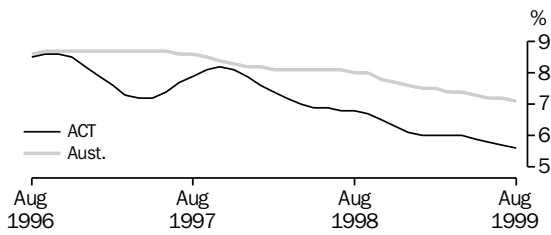
LABOUR FORCE, Employment



NEW MOTOR VEHICLE REGISTRATIONS

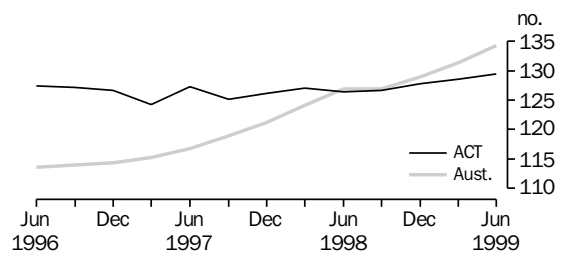


LABOUR FORCE, Unemployment Rate: **Trend**



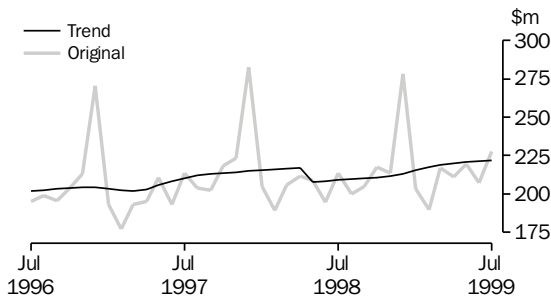
Note: Trend estimates for October 1998 to March 1999 have been revised.

ESTABLISHED HOUSE PRICE ANNUAL INDEX

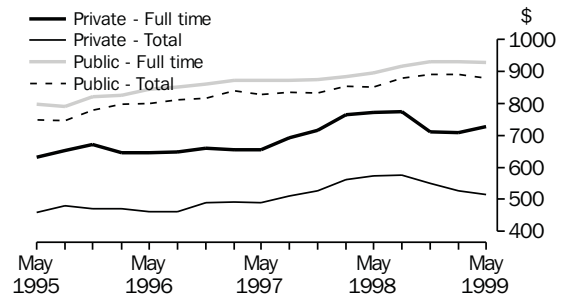


Base of index 1989-90 = 100.0

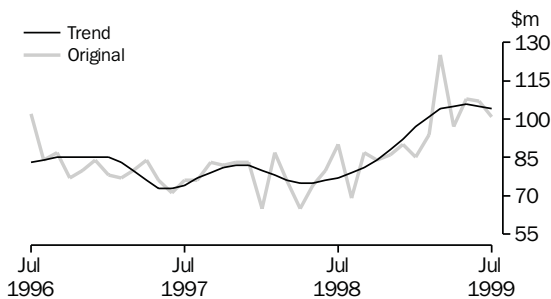
RETAIL TURNOVER



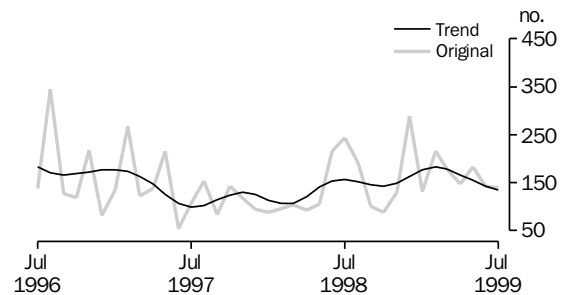
AVERAGE WEEKLY EARNINGS: **Original**



HOUSING FINANCE

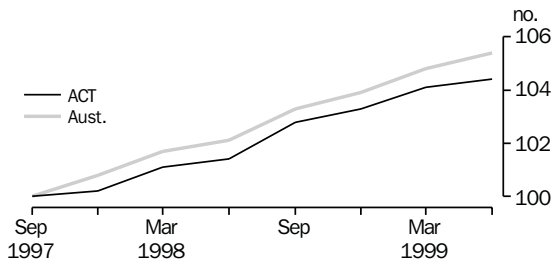


BUILDING APPROVAL, Dwelling Units Approved

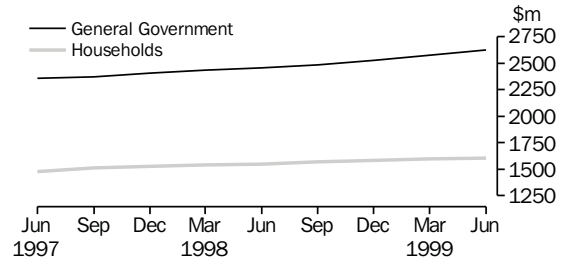


SELECTED BUSINESS INDICATORS *continued*

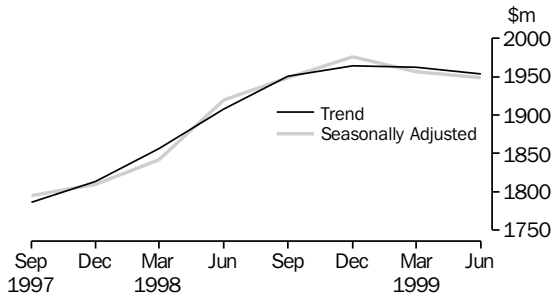
WAGE COST INDEX,
Total Hourly Rates of Pay Excluding Bonuses



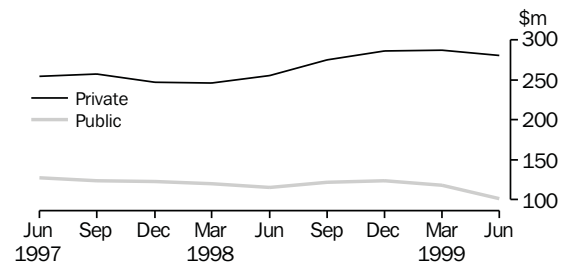
FINAL CONSUMPTION EXPENDITURE,
Chain Volume Measures: **Trend**



COMPENSATION OF EMPLOYEES, Current prices



GROSS FIXED CAPITAL FORMATION,
Chain Volume Measures: **Trend**



FEATURE ARTICLE

CAREER EXPERIENCE IN THE AUSTRALIAN CAPITAL TERRITORY

OVERVIEW

In November 1998 there were 136,500 employees in the ACT Labour Force. Of these:

- 96,100 had been with their current employer for one year or more and had experienced some change in their work in the previous 12 months;
- 7,200 had been with their current employer for one year or more and had no change in their work; and
- 33,200 had been with their current employer for less than one year.

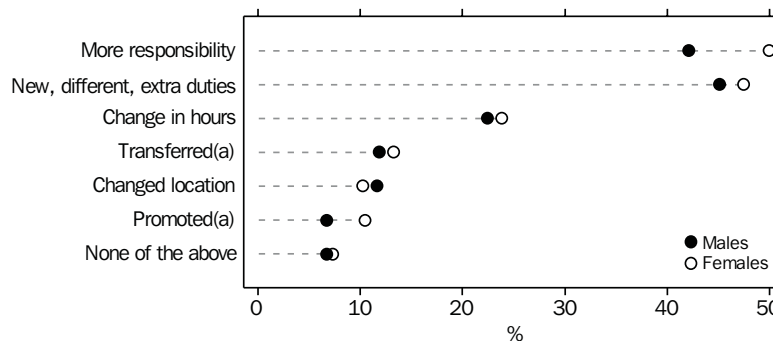
CHANGES IN WORK

Information on changes in work in the last 12 months was collected from employees who had worked with their current employer for one year or more.

The most commonly reported changes were: 'new, different, extra duties' and 'more responsibility' (reported by 46% of these employees) and 'a change in hours' (23%). Other changes included 'changed location', 'transfer', and 'promotion' (each at 8% to 13%). A small proportion reported 'none of the above' (7%). The figures recorded for the ACT were similar to those obtained for Australia.

Female employees in the ACT were more likely to have reported 'more responsibility' (50%) and being 'promoted' (10%) than male employees (42% and 7% respectively). While male employees were more likely to have reported 'changed locations' (12%) than female employees (10%). For Australia, female employees were more likely to have reported 'new, different or extra duties' (38%) and 'changed hours' (20%) than male employees (34% and 15% respectively). While a similar proportion of male and female employees had been promoted (7%).

ALL CHANGES IN WORK, By Sex—ACT—November 1998



(a) Excludes owner-managers who were not asked whether they had been promoted or transferred

Note: Totals include multiple responses, therefore components may sum to more than 100%.

CHANGES IN WORK <i>continued</i>	In the ACT, full-time employees were more likely to have had 'new, different, extra duties' and 'more responsibility' (both 51%) than part-time employees (both 29%). The most common change for part-time employees was a 'change in hours'. More than one-third (34%) of part-time employees had a 'change in hours' compared to only 21% of full-time employees. Similar trends were recorded for Australia.
LENGTH OF TIME WITH CURRENT EMPLOYER	In November 1998 in the ACT, 103,300 employees had been with their current employer for one year or more and 33,200 had been with their current employer for less than one year.
EDUCATION AND TRAINING	<p>In the ACT, of those employees who had worked for their current employer for one year or more, 57% received some kind of education or formal training in the 12 months to November 1998. Employees who received some kind of education or formal training had higher rates of promotion and job transfer. Of those who received some kind of education or formal training, 17% transferred and 11% gained a promotion, compared to 7% and 5% respectively for those who did not.</p> <p>The majority (83%) of the 76,100 employees who studied for an educational qualification or attended a formal training course had received some assistance from their employer. Of those full-time employees who attended formal training or studied, a large proportion (87%) received some form of assistance from their employer. In contrast, 67% of part-time employees received assistance. Nationally, assistance was received by 89% of full-time workers and 69% of part-time workers.</p>
CAREER BREAKS	Of those employees in the ACT who had worked for their current employer for six months or more, 4,800 (4%) had taken a break of six months or more from their current employment, compared to (3%) nationally.
CHILDCARE	<p>Just over half (52%) of the 22,900 employees with children under 12 years of age reported that they used some form of childcare. Just under half (49%) of these employees used informal childcare. Similar proportions were recorded for Australia.</p> <p>For further information please refer to the ABS publication <i>Career Experience, Australia, November 1998</i> (Cat. no. 6254.0).</p>

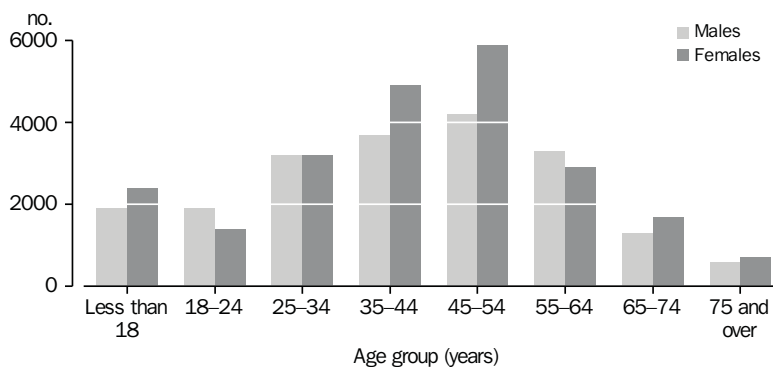
FEATURE ARTICLE

CARERS IN THE ACT

ALL PROVIDERS OF ASSISTANCE

In 1998, there were 43,100 people in the ACT who provided some assistance to those who needed help because of disability or aging. Both males and females were well represented as carers, although a majority of these people were female (56% nationally and 53% for the ACT). Of those providing some assistance in the ACT, 18,700 people or 43% were in the 35 to 54 age group when caring responsibilities may involve children, partners and aging parents. A further 4,300 were children under 18, and 1,300 were people aged 75 and over.

ALL PEOPLE PROVIDING ASSISTANCE, ACT—1998



Source: *Disability, Aging and Carers: Summary Tables, ACT, 1998* (Cat. no. 4430.8.40.001).

PRIMARY CARERS

Primary carers are those who provide most informal assistance with personal activities to a person with a disability, and therefore caring plays a major part in their lives. In 1998, 12% (5,200) of all people providing assistance in the ACT were primary carers, while 19% of the corresponding population nationally were primary carers. The majority of primary carers were female (ACT 83% and nationally 70%).

For further information on this survey, please refer to *Disability, Aging and Carers, Summary Tables ACT, 1998* (Cat. no. 4430.8.40.001) and *Disability, Aging and Carers: Summary of Findings, Australia, 1998* (Cat. no. 4430.0).

1

BUSINESS EXPECTATIONS: SALES

	<i>ACT</i>	<i>Aust.</i>
<i>Period</i>	%	%
Short-term		
Dec qtr 1997–Mar qtr 1998	-1.1	-0.3
Mar qtr 1998–Jun qtr 1998	-0.1	1.7
Jun qtr 1998–Sep qtr 1998	2.7	1.1
Sep qtr 1998–Dec qtr 1998	3.5	1.5
Dec qtr 1998–Mar qtr 1999	-2.7	-0.9
Mar qtr 1999–Jun qtr 1999	0.4	1.8
Jun qtr 1999–Sep qtr 1999	1.4	1.8
Medium-term		
Dec qtr 1997–Dec qtr 1998	2.9	3.0
Mar qtr 1998–Mar qtr 1999	2.6	2.6
Jun qtr 1998–Jun qtr 1999	6.9	2.7
Sep qtr 1998–Sep qtr 1999	7.5	2.8
Dec qtr 1998–Dec qtr 1999	2.6	2.7
Mar qtr 1999–Mar qtr 2000	1.7	2.3
Jun qtr 1999–Jun qtr 2000	5.7	3.3

Indicator	Unit	ACT			Aust.		
		% change from			% change from		
		Latest figure	Previous period	Same period previous year	Latest figure	Previous period	Same period previous year
POPULATION, VITAL AND LABOUR							
POPULATION, Dec qtr 98	'000	308.7	—	0.4	18 871.8	0.3	1.3
Natural increase	no.	752	2.3	-20.9	31 389	15.2	-1.5
Net migration	no.	-704	-44.6	54.5	27 429	-21.1	158.3
Total increase	no.	48	-80.6	150.0	58 818	-5.1	38.5
LABOUR FORCE, Aug 99							
Original Series							
Employed	'000	160.2	-0.4	2.9	8 731.6	-1.1	2.3
Unemployed	'000	9.7	11.5	-8.5	652.8	4.6	-9.9
Unemployment rate	%	5.7	0.6	-0.7	7.0	0.4	-0.8
Participation rate	%	71.6	0.1	0.7	62.5	-0.5	-0.1
Long-term unemployed, Jul 99	no.	2 520	-4.0	-30.9	187 317	-2.2	-21.6
Long-term unemployed as percentage of total unemployed		29.0	-2.7	-1.8	30.0	0.5	-1.5
Trend series							
Employed	'000	160.2	0.4	2.9	8 801.3	0.2	2.0
Unemployed	'000	9.6	-1.0	-15.0	674.8	-0.7	-10.6
Unemployment rate	%	5.6	-0.1	-1.2	7.1	-0.1	-0.9
Participation rate	%	71.5	0.1	0.2	63.1	—	-0.3
WAGE AND SALARY EARNERS							
Number employed—trend series, Feb qtr 99							
Public sector	'000	65.8	-1.2	-5.2	1 447.0	0.3	-1.2
Private sector	'000	78.9	5.6	15.7	5 730.5	1.5	7.0
Total	'000	144.7	2.4	5.2	7 177.5	1.3	5.2
Gross earnings—original series, Mar qtr 99							
Public sector	\$m	786.5	-14.1	-13.0	15 046.0	-1.6	-1.1
Private sector	\$m	586.9	10.7	29.6	46 897.6	5.1	10.8
Total	\$m	1 373.5	-5.0	1.2	61 943.6	3.4	7.7
JOB VACANCIES, May qtr 99							
INDUSTRIAL DISPUTES IN PROGRESS, May 99							
Working days lost	'000	0.0	—	-100.0	16.0	-43.1	-83.4
Days lost per '000 employees (year ended May 99)	no.	24.0	-29.4	33.3	62.0	-15.1	-18.4
BUILDING AND CONSTRUCTION							
HOUSING FINANCE, Jul 99							
Secured commitments to individuals for							
Original Series							
Construction of dwellings	\$m	12.0	—	9.1	887.0	-6.5	13.9
Purchase of new dwellings	\$m	7.0	133.3	16.7	245.0	-5.0	-5.4
Purchase of established dwellings	\$m	67.0	-9.5	45.7	4 763.0	-6.1	21.5
Re-financing	\$m	10.0	-28.6	-52.4	870.0	-11.4	-1.7
Total housing commitments	\$m	101.0	-5.6	12.2	5 895.0	-6.2	18.9
Seasonally adjusted series							
Total housing commitments	\$m	99.0	-6.6	20.7	5 664.0	-3.4	24.4
Trend series							
Dwelling units financed	no.	843	0.6	21.8	44 862	0.4	14.7
Total housing commitments	\$m	104.0	-1.0	35.1	5 890.0	0.8	29.1
BUILDING APPROVALS, Jul 99							
Original series							
Dwelling units	no.	139	-2.1	-43.0	14 826	4.7	3.1
Value of new residential	\$m	19.3	13.5	-30.6	1 770.6	8.5	14.7
Value of residential alterations and additions	\$m	6.3	117.2	43.2	285.7	13.7	1.0
Value of non-residential	\$m	21.4	756.0	-22.5	1 153.4	21.6	30.9
Value of total building	\$m	47.1	110.3	-21.1	3 209.7	13.4	18.6
Trend series							
Dwelling units	no.	135	-4.9	-14.0	13 692	2.0	5.3

Indicator	Unit	ACT			Aust.		
		% change from			% change from		
		Latest figure	Previous period	Same period previous year	Latest figure	Previous period	Same period previous year
BUILDING AND CONSTRUCTION <i>continued</i>							
BUILDING COMMENCEMENTS, Mar qtr 99							
New houses	no.	285	3.3	11.8	22 409	-12.3	8.2
Value of houses commenced	\$m	38.6	8.7	33.6	2 741.9	-10.2	16.6
Value of non-residential building commenced	\$m	130.1	167.7	91.3	2 857.8	-15.0	6.5
Value of total commencements	\$m	213.0	82.8	97.2	7 450.0	-11.1	13.1
PRICE INDEXES, Jun qtr 99							
Established house price index		129.5	0.7	2.5	134.3	2.3	5.8
ENGINEERING CONSTRUCTION (Mar qtr 99)							
Private sector							
Value of work commenced	\$m	20.6	112.4	-17.3	2 858.7	-0.4	5.7
Value of work done	\$m	11.5	-22.8	-45.0	2 642.7	-10.9	-7.2
Value of work yet to be done	\$m	17.5	110.8	78.6	5 869.3	3.0	-11.0
Value of work done by public sector	\$m	29.4	38.0	27.3	1 681.4	0.5	9.3
PRICES, WAGES AND CONSUMER SPENDING							
CONSUMER PRICE INDEX, Jun qtr 99							
Food(a)		128.3	-0.5	1.1	127.8	0.2	3.8
Housing(a)		94.7	0.4	1.4	96.6	0.4	2.2
Transportation(a)		128.2	1.3	-0.7	122.9	1.4	0.1
All groups(a)		121.5	0.1	0.2	122.3	0.4	1.1
AVERAGE WEEKLY EARNINGS, May qtr 99							
Original series							
Males	\$	886.5	0.4	-2.0	798.4	1.2	3.3
Females	\$	776.3	-0.3	1.5	669.6	0.2	3.5
Persons	\$	841.4	0.1	-0.7	750.8	0.8	3.3
Trend series							
Males	\$	881.4	-0.8	-3.0	796.0	0.6	2.6
Females	\$	775.3	-0.1	0.9	670.6	0.7	3.6
Persons	\$	836.8	-0.7	-1.5	749.4	0.6	2.9
WAGE COST INDEX, Jun qtr 99							
Public sector(b)		104.5	0.1	3.2	106.2	0.3	3.9
Private sector(b)		104.3	0.6	2.7	105.1	0.6	2.9
Total(b)		104.4	0.3	3.0	105.4	0.6	3.2
RETAIL TURNOVER, Jul 99							
Original series							
Food retailing	\$m	82.2	5.2	1.7	4 768.9	6.4	5.2
Department stores	\$m	25.8	30.3	-5.1	1 054.7	17.9	1.2
Hospitality and services	\$m	34.1	5.6	7.2	2 008.2	6.3	12.1
All other retailing	\$m	85.5	10.9	16.2	3 844.6	2.6	6.1
Total	\$m	227.6	9.8	6.7	11 676.4	6.0	6.2
Trend series							
Food retailing	\$m	80.8	-0.1	1.4	4 715.7	-0.2	3.9
Department stores	\$m	23.4	—	-5.6	1 028.0	-0.2	1.3
Hospitality and services	\$m	33.4	-0.9	1.5	2 020.0	0.2	11.5
All other retailing	\$m	84.3	1.1	17.2	3 904.2	-0.1	6.4
Total	\$m	221.9	0.2	6.0	11 667.9	-0.1	5.8

(a) Base year: 1989-90=100.0.

(b) Base of each index: September quarter 1997 = 100.0.

Indicator	Unit	ACT			Aust.		
		Latest figure	% change from		Latest figure	% change from	
			Previous period	Same period previous year		Previous period	Same period previous year
TOURISM AND TRANSPORT							
HOTELS, MOTELS AND GUEST HOUSE ACCOMMODATION, Mar qtr 99							
Original series							
Room nights	'000	241.1	-0.7	-0.7	9 585.8	-3.2	5.9
Takings at current prices	\$m	23.7	-2.9	-2.5	1 003.1	-3.8	5.0
Guest arrivals	'000	180.0	-7.7	-5.2	7 597.6	-4.7	4.1
Guest nights	'000	402.4	-4.1	-3.2	17 112.5	-2.5	6.6
Room occupancy rate	%	57.6	-2.2	-11.1	58.1	-2.2	0.2
NEW MOTOR VEHICLE REGISTRATIONS, Jul 99							
Motor vehicles	no.	1 212	-13.4	-25.8	64 418	-19.0	-12.9
Seasonally adjusted motor vehicles	no.	1 209	6.3	3.4	62 563	-5.9	-9.9
Trend motor vehicles	no.	1 178	1.0	-15.8	64 416	-0.7	-6.2
AGGREGATE INDICATORS							
STATE ACCOUNTS, Jun qtr 99(a)							
Original series (chain volume measures)(b)							
Household final consumption expenditure	\$m	1 585	4.5	3.7	87 576	3.6	4.9
General government final consumption expenditure	\$m	2 745	23.3	1.4	27 968	12.1	3.0
Private gross fixed capital formation(c)	\$m	444	58.0	-10.5	30 174	14.9	3.3
Public gross fixed capital formation(c)	\$m	-47	-144.3	42.0	7 763	33.8	9.2
State final demand	\$m	4 726	14.4	1.6	153 481	8.4	4.4
Gross state product	\$m	11 943	4.3	n.a.	555 689	4.6	n.a.
STATE ACCOUNTS, Jun qtr 99(a)							
Original series (at current prices)							
Household final consumption expenditure	\$m	1 612	4.7	4.4	88 978	3.9	5.9
General government final consumption expenditure	\$m	2 803	23.6	3.3	28 670	11.9	5.1
Private gross fixed capital formation(c)	\$m	443	58.2	-11.6	30 431	13.4	3.3
Public gross fixed capital formation(c)	\$m	-33	-132.7	60.7	7 910	36.4	10.2
State final demand	\$m	4 826	15.2	3.2	155 990	8.4	5.5
Gross state product	\$m	12 111	5.8	n.a.	563 517	6.1	n.a.
PRIVATE NEW CAPITAL EXPENDITURE, Mar qtr 99							
Original series (at current prices)							
Buildings and structures	\$m	14	-51.7	27.3	3 097	-24.5	9.3
Equipment, plant and machinery	\$m	60	-28.6	114.3	7 425	-5.5	-0.6
Total	\$m	74	-34.5	89.7	10 522	-12.0	2.1
Trend series (at current prices)							
Buildings and structures	\$m	17	-29.2	-5.6	3 511	-5.8	4.8
Equipment, plant and machinery	\$m	80	11.1	135.3	8 068	1.7	-4.6
Total	\$m	98	2.1	88.5	11 579	-0.7	-1.9

(a) Quarterly state final demand details are released as a special data service (Cat. no. 5206.0.40.001).

(b) Reference year for chain volume measures is 1996-97.

(c) These series have been affected by government asset sales; please refer to *Australian National Accounts: Quarterly State Accounts, June Quarter 1999* (Cat. no. 5206.0.40.001).

Source: ABS publications: *Australia Demographic Statistics* (Cat. no. 3101.0), *Australian National Accounts: State Accounts* (Cat. no. 5206.0), *Building Activity, Australia* (Cat. no. 8752.0), *Building Approvals, Australia* (Cat. no. 8731.0), *Consumer Price Index* (Cat. no. 6401.0), *Housing Finance for Owner Occupation, Australia* (Cat. no. 5609.0), *House Price Indexes: Eight Capital Cities* (Cat. no. 6416.0), *Industrial Disputes, Australia* (Cat. no. 6321.0), *Job Vacancies and Overtime, Australia* (Cat. no. 6354.0), *Labour Force, Australia, Preliminary* (Cat. no. 6202.0), *Labour Force, Australia* (Cat. no. 6203.0), *New Motor Vehicle Registration, Australia* (Cat. no. 9301.0), *Price Index of Materials Used in Housing Building* (Cat. no. 6408.0), *Private New Capital Expenditure, State Estimates* (Cat. no. 5646.0), *Retail Trade, Australia* (Cat. no. 8501.0), *Tourism Accommodation, ACT* (Cat. no. 8635.8).

Indicator	Unit	Latest period	NSW	Vic.	Qld	SA	WA	Tas.	NT	ACT	Aust.
POPULATION	'000	Dec qtr 98	6 384.3	4 689.8	3 485.2	1 490.4	1 847.8	471.1	191.4	308.7	18 871.8
LABOUR FORCE (trend)											
Employed persons	'000	Aug 99	2 937.6	2 195.2	1 648.5	663.0	904.0	197.0	94.1	160.2	8 801.3
Unemployment rate	%	Aug 99	6.4	7.5	7.9	8.3	6.4	8.9	3.2	5.6	7.1
WAGE AND SALARY EARNERS (trend)											
Public sector	'000	Feb qtr 99	468.2	305.4	285.8	113.1	145.8	41.5	21.8	65.8	1 447.0
Private sector	'000	Feb qtr 99	2 021.2	1 504.7	977.3	407.3	576.5	114.9	49.7	78.9	5 730.5
Total public and private sector (trend)	'000	Feb qtr 99	2 489.3	1 810.1	1 263.1	520.4	722.3	156.3	71.5	144.7	7 177.5
STATE ACCOUNTS(a) (original)											
Gross state product (chain volume measures)(b)(c)	\$m	1997-98	196 676	141 219	90 188	38 092	60 695	11 095	5 779	11 943	555 689
Gross state product (current prices)	\$m	1997-98	199 448	143 209	91 459	38 629	61 550	11 251	5 860	12 111	563 517
PRIVATE NEW CAPITAL EXPENDITURE (trend)	\$m	Mar qtr 98	3 756	2 921	2 159	563	1 657	116	443	98	11 579
BUILDING APPROVALS											
Dwelling units approved (original)	no.	Jul 99	4 926	3 893	2 699	842	2 038	158	131	139	14 826
Dwelling units approved (trend)	no.	Jul 99	4 512	3 639	2 393	736	2 004	127	146	135	13 692
Value of non-residential building approved (original)	\$m	Jul 99	521.2	248.2	220.5	24.1	94.1	18.7	5.2	21.4	1 153.4
Value of all buildings approved (original)	\$m	Jul 99	1 258.8	807.4	549.3	140.0	345.0	37.6	24.4	47.1	3 209.7
ENGINEERING CONSTRUCTION											
Value of engineering construction work done	\$m	Mar qtr 99	1 289.4	865.4	1 078.8	218.8	695.8	62.7	72.3	41.0	4 324.1
AVERAGE WEEKLY EARNINGS (trend)											
Full-time adult ordinary time	\$	May qtr 99	792.7	734.9	703.6	699.4	750.9	696.3	752.3	836.8	749.4
RETAIL TRADE (trend)											
Retail turnover	\$m	Jul 99	4 049.8	2 857.2	2 153.3	833.0	1 152.9	266.7	126.2	221.9	11 667.9
HOTELS, MOTELS & GUEST HOUSE ACCOMMODATION											
Room nights occupied	'000	Mar qtr 99	3 213.2	1 680.8	2 489.4	524.8	878.9	327.8	229.8	241.1	9 585.8
Room occupancy rate	%	Mar qtr 99	60.6	62.0	54.9	58.0	55.8	66.1	42.2	57.6	58.4
NEW MOTOR VEHICLE REGISTRATIONS (trend)	no.	Jul 99	23 194	17 390	10 495	4 082	6 196	1 220	661	1 178	64 416
CONSUMER PRICE INDEX	Unit	Latest period	Syd.	Melb.	Bris.	Adel.	Perth	Hob.	Dar.	Canb.	Aust.
Food(d)		Jun qtr 99	128.7	126.7	126.3	128.8	129.6	126.8	126.7	128.3	127.8
Housing(d)		Jun qtr 99	104.3	87.5	102.0	92.8	91.3	95.9	116.9	94.7	96.6
Transportation(d)		Jun qtr 99	124.2	121.6	121.8	122.4	123.2	120.4	119.3	128.2	122.9
All Groups(d)		Jun qtr 99	123.0	121.5	123.1	123.6	120.8	122.5	122.7	121.5	122.3
Average retail prices (cents)											
Milk, carton, supermarket sales	1 litre	Mar qtr 99	122	140	126	136	141	130	135	115	n.a.
Bread, white loaf, sliced, supermarket sales	680 g	Mar qtr 99	211	233	200	163	203	203	220	212	n.a.
Beef, rump steak	1 kg	Jun qtr 99	1 249	1 090	1 033	1 201	1 138	1 081	1 207	1 214	n.a.
Chicken, frozen	1 kg	Jun qtr 99	353	354	348	353	362	387	427	336	n.a.
Potatoes	1 kg	Jun qtr 99	130	155	136	81	137	82	159	142	n.a.
Coffee, instant (jar)	150 g	Jun qtr 99	655	592	633	586	615	636	564	520	n.a.
Scotch nip, public bar	30 ml	Jun qtr 99	331	321	271	363	387	264	333	273	n.a.
Private motoring petrol											
Leaded	1 litre	Jun qtr 99	72.6	70.2	63.3	71.2	73.0	77.9	78.7	74.6	n.a.
Unleaded	1 litre	Jun qtr 99	70.1	67.8	60.9	68.8	70.7	75.9	76.7	72.3	n.a.

(a) State estimates are not comparable to national estimates from the June quarter 1995 due to revised methodology used in *Australian National Accounts, State Accounts* (Cat. no. 5242.0).

(b) Experimental series. Users are cautioned these estimates are derived indirectly by calculating a deflator from the expenditure components of the state series concerned. Therefore, in general, the sum of the state estimates does not equal the estimates for Australia.

(c) Reference year for chain volume measures is 1996-97.

Indicator	Latest									
	period	NSW	Vic.	Qld	SA	WA	Tas.	NT	ACT	Aust.
POPULATION	Dec qtr 98	0.3	0.3	0.4	0.1	0.4	-0.1	0.3	—	0.3
LABOUR FORCE (trend)										
Employed persons	Aug 99	0.2	0.3	0.1	0.1	0.2	0.2	-0.1	0.4	0.2
Unemployment rate	Aug 99	—	—	-0.1	—	-0.1	-0.3	-0.8	-0.1	-0.1
WAGE AND SALARY EARNERS (trend)										
Pubic sector	Feb qtr 99	0.8	0.1	0.6	-0.8	1.1	0.7	-1.8	-1.2	0.3
Private sector	Feb qtr 99	1.4	2.7	—	—	1.7	1.1	3.8	5.6	1.5
Total public and private sector	Feb qtr 99	1.3	2.3	0.1	-0.2	1.6	0.9	2.0	2.4	1.3
STATE ACCOUNTS(a) (original)										
Gross state product (chain volume measures)(b)(c)	1997-98	4.6	3.8	4.9	4.6	6.5	4.0	5.1	4.3	4.6
Gross state product (current prices)	1997-98	6.0	5.3	6.4	6.1	8.0	5.5	6.5	5.8	6.1
PRIVATE NEW CAPITAL EXPENDITURE (trend)										
Total (at current prices)	Mar qtr 99	1.5	1.2	8.6	-6.2	-10.5	-3.3	-4.9	2.1	-0.7
BUILDING APPROVALS										
Dwelling units approved (original)	Jul 99	6.8	17.5	4.3	-0.4	-14.6	79.5	-27.2	-2.1	4.7
Dwelling units approved (trend)	Jul 99	1.8	1.4	1.1	2.8	3.4	4.1	-3.3	-4.9	2.0
Value of non-residential building approved (original)	Jul 99	3.5	35.5	40.3	-9.1	54.5	156.2	-27.8	756.0	21.6
Value of all buildings approved (original)	Jul 99	7.5	18.8	18.6	21.4	5.5	90.9	-25.2	110.3	13.4
ENGINEERING CONSTRUCTION										
Value of engineering construction work done	Mar qtr 99	-8.8	2.6	-4.8	-10.6	-14.6	11.2	-26.1	13.3	-6.8
AVERAGE WEEKLY EARNINGS (trend)										
Full-time adult ordinary time	May qtr 99	1.3	0.2	0.5	-0.2	0.4	-0.2	0.1	-0.7	0.6
RETAIL TRADE (trend)										
Retail turnover	Jul 99	-0.3	0.7	-0.5	-0.5	-0.5	-0.3	0.4	0.2	-0.1
HOTELS, MOTELS & GUEST HOUSE ACCOMMODATION										
Room nights occupied	Mar qtr 99	0.1	4.9	-10.9	-6.7	-3.9	15.1	-21.6	-0.7	-3.2
Room occupancy rate	Mar qtr 99	0.8	3.3	-5.7	-2.8	-1.9	9.9	-10.6	-1.3	-1.0
NEW MOTOR VEHICLE REGISTRATIONS (trend)	Jul 99	1.0	-0.5	-3.1	-0.8	-2.8	-2.0	-3.5	1.0	-0.7
	Latest									
	period	Syd.	Melb.	Bris.	Adel.	Perth	Hob.	Dar.	Canb.	Aust.
CONSUMER PRICE INDEX										
Food(d)	Jun qtr 99	-0.3	0.7	-0.1	0.6	0.9	1.0	120.6	-0.5	0.2
Housing(d)	Jun qtr 99	0.5	0.2	0.4	0.7	0.8	0.1	0.8	0.4	0.4
Transportation(d)	Jun qtr 99	1.4	1.4	1.1	1.2	1.7	1.7	0.2	1.3	1.4
All Groups(d)	Jun qtr 99	0.3	0.4	0.2	0.7	0.8	0.3	0.5	0.1	0.4
Average retail prices (cents)										
Milk, carton, supermarket sales	Jun qtr 99	—	0.7	5.9	—	—	—	3.8	0.0	n.a.
Bread, white loaf, sliced, supermarket sales	Jun qtr 99	-2.8	9.9	4.2	1.2	-2.4	—	1.4	1.0	n.a.
Beef, rump steak	Jun qtr 99	5.8	2.9	-3.1	0.7	4.3	8.0	1.4	6.3	n.a.
Chicken, frozen	Jun qtr 99	-4.3	-0.8	8.1	-3.3	3.4	2.4	12.1	-6.9	n.a.
Potatoes	Jun qtr 99	0.8	4.0	9.7	-1.2	-0.7	-7.9	6.7	-2.7	n.a.
Coffee, instant (jar)	Jun qtr 99	4.5	-6.6	8.4	5.4	-4.4	8.2	-4.2	-2.8	n.a.
Scotch nip, public bar	Jun qtr 99	0.6	0.9	0.7	1.4	-0.5	—	0.9	0.0	n.a.
Private motoring petrol										
Leaded	Jun qtr 99	5.7	5.1	5.1	4.2	6.0	5.1	4.0	3.6	n.a.
Unleaded	Jun qtr 99	5.6	5.0	5.2	4.4	6.0	5.3	4.1	3.7	n.a.

(a) State estimates are not comparable to national estimates from the June quarter 1995 due to revised methodology used in *Australian National Accounts, State Accounts* (Cat. no. 5242.0).

(b) Experimental series. Users are cautioned these estimates are derived indirectly by calculating a deflator from the expenditure components of the state series concerned. Therefore, in general, the sum of the state estimates does not equal the estimates for Australia.

(c) Reference year for chain volume measures is 1996-97.

(d) Base year: 1989-90 = 100.0.

SELF-HELP ACCESS TO STATISTICS

- CPI INFOLINE* For current and historical Consumer Price Index data, call 1902 981 074 (call cost 75c per minute).
- DIAL-A-STATISTIC* For the latest figures for National Accounts, Balance of Payments, Labour Force, Average Weekly Earnings, Estimated Resident Population and the Consumer Price Index call 1900 986 400 (call cost 75c per minute).
- INTERNET* www.abs.gov.au
- LIBRARY* A range of ABS publications is available from public and tertiary libraries Australia-wide. Contact your nearest library to determine whether it has the ABS statistics you require.

WHY NOT SUBSCRIBE?

- PHONE* +61 1300 366 323
- FAX* +61 03 9615 7848

CONSULTANCY SERVICES

ABS offers consultancy services on a user pays basis to help you access published and unpublished data. Data that is already published and can be provided within 5 minutes is free of charge. Statistical methodological services are also available. Please contact:

<i>INQUIRIES</i>	<i>City</i>	<i>By phone</i>	<i>By fax</i>
	Canberra	02 6252 6627	02 6207 0282
	Sydney	02 9268 4611	02 9268 4668
	Melbourne	03 9615 7755	03 9615 7798
	Brisbane	07 3222 6351	07 3222 6283
	Perth	08 9360 5140	08 9360 5955
	Adelaide	08 8237 7400	08 8237 7566
	Hobart	03 6222 5800	03 6222 5995
	Darwin	08 8943 2111	08 8981 1218

POST Client Services, ABS, PO Box 10, Belconnen ACT 2616

EMAIL client.services@abs.gov.au



2130380009992
ISSN 1320-808X

RRP \$15.50

© Commonwealth of Australia 1999

Produced by the Australian Bureau of Statistics